



PSI
 3210 E Tropicana
 Las Vegas, NV 89121
 www.psiexams.com



STATE OF NEW MEXICO

JOURNEYMAN EXAMINATIONS CANDIDATE INFORMATION BULLETIN

Examinations by PSI	1	Security Procedures.....	3
Examination Scheduling Procedures	1	Taking the Examination by Computer.....	3
Internet Scheduling.....	1	Identification	3
Fax Registration.....	1	Tutorial.....	3
Standard Mail Registration.....	1	Examination Question Example	3
Telephone Scheduling	1	Experimental Questions	4
Canceling an Examination	2	Examination Review	4
Missed Appointment or Late Cancellation	2	Scope Reporting.....	4
Special Examination Arrangements.....	2	Duplicate Score Reports	4
Emergency Examination Center Closing	2	Tips for Preparing for your License Examination	4
Examination Site Location.....	2	Examination Content Outlines	4
Reporting to the Examination Site	3	Examination Registration Form	19
Required Identification	3	Special Arrangement Request Form	End of Bulletin

Please refer to our website to check for the most updated information at www.psiexams.com

EXAMINATIONS BY PSI

This Candidate Information Bulletin provides you with information about the approval and examination process for journeyman certification in the State of New Mexico.

Candidates must be pre approved to take any examination. Please refer to public.psiexams.com to view our *Frequently Asked Questions* and to download instructional forms and applications. If you have any eligibility questions please call 877 663 9267.

Note: once you become eligible you must test within 6 months of the date of eligibility. If you do not test within 6 months you will need to reapply with the Division.

The Construction Industries Division of The New Mexico Regulation and Licensing Department (CID) has contracted with PSI to conduct its examination approval process and examination testing. PSI provides examinations through a network of computer examination centers in New Mexico and in many areas throughout the United States. PSI works closely with the State to be certain that examinations meet local as well as national requirements in basic principles and examination development standards.

EXAMINATION SCHEDULING PROCEDURES

In order to schedule for an examination, you must be pre-approved.

Once you receive your approval, you will be responsible for contacting PSI to schedule an appointment to take an examination and make examination payment arrangements. The examination fee is valid for 1 year from the date PSI receives the fee.

You may not take the same examination more than twice within a 30-day period. If you have two fails within a 30-day period, you must wait 30 days from your 1st attempt, before you can test again.

Passing scores are valid for 1 year from the date of your examination.

Fees are listed on the registration form found at the end of this Candidate Information Bulletin.

INTERNET REGISTRATION

For the fastest and most convenient test scheduling process, PSI recommends that candidates register for their examinations using the Internet. To register over the Internet, candidates will need a valid credit card (VISA, MasterCard, American Express or Discover).

Candidates register online by accessing PSI's registration website at www.psiexams.com. Internet registration is available 24 hours a day. To register by Internet, complete the steps as follows:

1. Complete the registration form on line and send it to PSI via the Internet.
2. Upon completion of the online registration form, you will be given the available examination dates and locations for scheduling your examination. Select your desired testing date.

FAX REGISTRATION

For fax registration, you will need a valid credit card (VISA, MasterCard, American Express or Discover).

1. Complete the Examination Registration Form, including your credit card number and expiration date.
2. Fax the completed form to PSI (702) 932-2666. Fax registrations are accepted 24 hours a day.

Please allow 4 business days to process your registration. After 4 business days, you may call PSI to schedule the examination at (800) 733-9267.

STANDARD MAIL REGISTRATION

1. Complete the Examination Registration Form found in this Candidate Information Bulletin. BE SURE TO READ ALL DIRECTIONS CAREFULLY BEFORE COMPLETING THE EXAMINATION REGISTRATION FORM. IMPROPERLY COMPLETED FORMS WILL BE RETURNED TO YOU UNPROCESSED.
2. Return the completed original form to PSI with the appropriate examination fee. Payment of fees may be made by credit card (VISA, MasterCard, American Express or Discover), company check, cashier's check or money order. Check or money order should be made payable to PSI, with your social security noted on it to ensure that your fees are properly assigned. **CASH AND PERSONAL CHECKS ARE NOT ACCEPTED.**

Please allow 7 business days to process your registration before scheduling your examination at (800) 733-9267.

TELEPHONE REGISTRATION

For telephone registration, you will need a valid credit card (VISA, MasterCard, American Express or Discover).

1. Complete the Examination Registration Form, including your credit card number and expiration date, so that you will be prepared with all of the information needed to register by telephone.
2. You may call (800) 733-9267, 24 hours a day and register using the Automated Registration System. Otherwise, PSI registrars are available Monday through Friday between 5:30 am and 8:00 pm, and Saturday-Sunday between 7:00 am and 3:30 pm, Mountain Time, to receive the information listed on your Examination Registration Form and to schedule your appointment for the examination.

PSI will make every effort to schedule the examination site and time that is most convenient for you. If space is available in the examination site of your choice, you may schedule an examination 1 day prior to the examination date of your choice, up to 5:00 pm, Mountain Time. Please be prepared to accept alternate examination appointment choices.



CANCELING AN EXAMINATION APPOINTMENT

You may cancel and reschedule an examination appointment without forfeiting your fee if your *cancellation notice is received 2 days before the scheduled examination date*. For example, for a Monday appointment, the cancellation notice would need to be received on the previous Saturday. You may call PSI at (800) 733-9267. Please note that you may also use the automated system, using a touch-tone phone, 24 hours a day in order to cancel and reschedule your appointment.

Note: A voice-mail message is not an acceptable form of cancellation. Please use the PSI Website, automated telephone system, or call PSI and speak to a Customer Service Representative.

MISSED APPOINTMENT OR LATE CANCELLATION

Your registration will be invalid, you will not be able to take the examination as scheduled, and you will forfeit your examination fee, if you:

- Do not cancel your appointment at least 2 days before the schedule examination date;
- Do not appear for your examination appointment;
- Arrive after examination start time; or
- Do not present proper identification when you arrive for the examination.

SPECIAL EXAMINATION ARRANGEMENTS

All examination centers are equipped to provide access in accordance with the Americans with Disabilities Act (ADA) of 1990, and every reasonable accommodation will be made in meeting a candidate's needs. Applicants with disabilities or those who would otherwise have difficulty taking the examination must fill out the form at the end of this Candidate Information Bulletin and fax it to PSI (702) 932-2666. This form also includes out-of-state testing requests.

EXAMINATION SITE CLOSING FOR AN EMERGENCY

In the event that severe weather or another emergency forces the closure of an examination site on a scheduled examination date, your examination will be rescheduled. PSI personnel will attempt to contact you in this situation. However, you may check the status of your examination schedule by calling (800) 733-9267. Every effort will be made to reschedule your examination at a convenient time as soon as possible.

EXAMINATION SITE LOCATION

The New Mexico examinations are administered at the PSI examination centers in New Mexico as listed below:

Albuquerque

2301 Yale Blvd, SE
Building C, Suite 4
Albuquerque, NM 87106

From Interstate 25, take the Gibson Blvd exit and travel East on Gibson Blvd until you reach Yale Blvd Southeast. Turn right on Yale Blvd S.E. (heading South), just past Renard Place and then turn right into the Commerce Center. The site is across the street from the Waffle House and Comfort Inn.

Farmington

1307 E. 20th St.
Farmington, NM 87401
From E Main St, turn right on Sullivan and turn left on 20th St.

Las Cruces

1001 N. Solano, Suite # D
Las Cruces, NM 88001
Take Highway 70 West to Solano. Turn South on Solano and go one block past Spruce to Pinon. The test center is on the Northwest corner of Solano and Pinon.

Roswell

105 E. Fifth St.
Roswell, NM 88201
From US-285 S / US-70 W, turn LEFT onto E 5TH ST.

Santa Fe

4001 Office Court Drive, Suite 301
Santa Fe, NM 87507
From Albuquerque International Sunport Airport: Head East on Sunport Blvd SE. Merge onto I-25 N via the ramp to I-40/Downtown and Santa Fe. Take exit 278 and merge onto Cerrillos Road/NM-14 N. Approximately 2.5 miles north on Cerrillos Road, turn right on Wagon Road. Turn right on Office Court Drive into the office park.

From Espanola, NM and North Cities: Head Southeast on East Paseo De Oñate/US-285S/US-84S (toward Calle Espinosa). Continue on Sandia Drive. Slight right at South Riverside Drive/US-285S/US-84S. Turn right on Cerrillos Road. Approximately 5 miles on Cerrillos Road, turn left on Wagon Road. Turn right on Office Court Drive into the office park.

Colorado Examination Site

The following site will offer the New Mexico examinations.

Durango

799 East 3rd Street, Suite 3
Durango, CO 81301
From Hwy 550: Turn East on College Drive. Go straight then turn right on East 8th Avenue. Follow until East 3rd Street. PSI Testing Site is on the right in Suite 3.

Texas Examination Sites

The following sites will offer the New Mexico examinations.

Amarillo

4312 Teckla, Suite 500
Amarillo, TX 79109
*Exit off I-40 to Western and go South one street passed the 7th traffic light to Ridgecrest and turn right. Stay on Ridgecrest until you come to the red brick office complex on the left side corner of Ridgecrest and Teckla. 4312 is the 3rd building facing Teckla. Ste 500 is the end suite on the North side of the building.
From Canyon, take Bell St exit and go North to traffic light at 45th St and turn right. Turn left at the 2nd traffic light to Teckla.*

El Paso

The Atrium
1155 Westmoreland, Suite 110
El Paso, TX 79925
From I-10 W, take the Airways exit North. Turn right at the first light (Viscount). Turn right on Westmoreland Dr.

Lubbock

The Center
4413 82nd St., Suite 210
Lubbock, TX 79424
From S Loop 289, take the Quaker Ave exit and go South. Turn right on 82nd St.



Midland

Westwood Village Shopping Center
4200 West Illinois Avenue, Suite 200
Midland, TX 79703

From I-20, take Midkiff Road exit. Go North on Midkiff Road. Take a left on Illinois Ave. Go .8 miles and turn right into Chinese Kitchen's parking lot at 4200 W Illinois. Suite is at the end of the left Strip.
From Business 20 (Old Hwy 80) going West, follow Front Street until Wall St Traffic light. Go 2 blocks and turn right on Midkiff. Turn left on Illinois. Go .8 miles and turn right into Chinese Kitchen's parking lot at 4200 W Illinois. Suite is at the end of the left Strip.
From North Hwy 349, Look for Loop 250 West (just before overpass). Turn right at Loop and go 2 miles to Exit Midkiff. Turn left at traffic light. Turn right at Illinois traffic signal. Turn right onto Chinese Kitchen's parking Lot at 4200 W Illinois. Suite is at the end of the left Strip.

Additionally, PSI has examination centers in many other regions across the United States. You may take this examination at any of these locations by filling out the Special Arrangement Request Form found at the end of this Candidate Information Bulletin.

REPORTING TO THE EXAMINATION SITE

On the day of the examination, you should arrive at least 30 minutes before your appointment. This extra time is for sign-in, identification, and familiarizing you with the examination process. *If you arrive late, you may not be admitted to the examination site and you will forfeit your examination registration fee.*

REQUIRED IDENTIFICATION AT EXAMINATION SITE

You must provide 2 forms of identification. One must be a VALID form of government issued identification (driver's license, state ID, passport, military ID), which bears your signature and has your photograph. The second ID must have your signature and preprinted legal name. All identification provided must match the name on the Eligibility Letter.

If you cannot provide the required identification, you must call (800) 733-9267 at least 3 weeks prior to your scheduled appointment to arrange a way to meet this security requirement. *Failure to provide all of the required identification at the time of the examination without notifying PSI is considered a missed appointment, and you will not be able to take the examination.*

SECURITY PROCEDURES

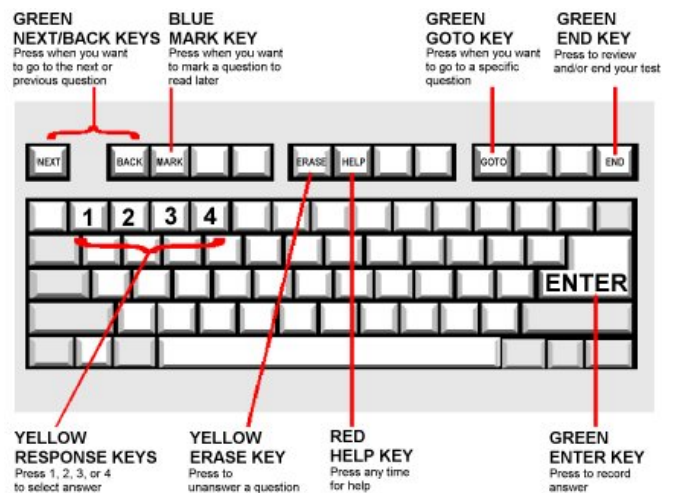
The following security procedures will apply during the examination:

- NO conversing or any other form of communication among candidates is permitted once you enter the examination area.
- Cell phones, pagers, recording devices, and children are not allowed in the examination center. **NO personal items are to enter the testing center.** PSI will not be responsible for any personal items and suggests that you leave them locked in the trunk of your car.
- Only non-programmable calculators that are silent, battery-operated, do not have paper tape printing capabilities, and do not have a keyboard containing the alphabet will be allowed in the examination site.

- No smoking, eating, or drinking will be allowed at the examination site.
- You may not exit the building during the examination.
- Copying or communicating examination content is a violation of PSI security policy and the State Law. Either one may result in the disqualification of examination results and may lead to legal action.

TAKING THE EXAMINATION BY COMPUTER

Taking the PSI written examination by computer is simple. You do not need any computer experience or typing skills. You will use fewer keys than you use on a touch-tone telephone. All response keys are colored and have prominent characters. An illustration of the special keyboard is shown here. You may also use a mouse.



IDENTIFICATION SCREEN

You will be directed to a semiprivate testing station to take the examination. When you are seated at the testing station, you will be prompted to confirm your name, identification number, and the examination for which you are registered.

TUTORIAL

Before you start your examination, an introductory tutorial to the computer and keyboard is provided on the computer screen. The time you spend on this tutorial, up to 15 minutes, DOES NOT count as part of your examination time. Sample questions are included following the tutorial so that you may practice using the keys, answering questions, and reviewing your answers.

One question appears on the screen at a time. During the examination, minutes remaining will be displayed at the top of the screen and updated as you record your answers.

EXAMINATION QUESTION EXAMPLE

During the examination, you should press 1, 2, 3, or 4 to select your answer or press "MARK" to mark it for later review. You should then press "ENTER" to record your answer and move on to the next question. A sample question display follows:



IMPORTANT: After you have entered your responses, you will later be able to return to any question(s) and change your response, provided the examination time has not run out.

EXPERIMENTAL QUESTIONS

In addition to the number of questions per examination, a small number of five to ten “experimental” questions may be administered to candidates during the examinations. These questions will not be scored and the time taken to answer them will not count against examination time. The administration of such non-scored experimental questions is an essential step in developing future licensing examinations.

EXAMINATION REVIEW

PSI, in cooperation with the New Mexico Regulation and Licensing Department, will be consistently evaluating the examinations being administered to ensure that the examinations accurately measure competency in the required knowledge areas. Comments may be entered on the computer keyboard during the examination. Your comments regarding the questions and the examinations are welcomed. Comments will be analyzed by PSI examination development staff. While PSI does not respond to individuals regarding these comments, all substantive comments are reviewed. If a discrepancy is found during the comment review, PSI and the department may re-evaluate candidates’ results and adjust them accordingly. **This is the only review of examination materials available to applicants.**

SCORE REPORTING

Your score will be given to you immediately following completion of the theory examination. The following summary describes the score reporting process:

- **On screen** - your score will appear immediately on the computer screen. This will happen automatically at the end of the time allowed for the examination;
 - If you **pass**, you will immediately receive a successful notification.
 - If you **do not pass**, you will receive a diagnostic report indicating your strengths and weaknesses by examination type with the score report.
- **On paper** - an unofficial score report will be printed at the examination site.

Your practical score report will be mailed to you within 7 business days of the test date.

DUPLICATE SCORE REPORTS

You may request a duplicate score report after your examination by emailing scorereport@psionline.com or by calling 800-733-9267.

TIPS FOR PREPARING FOR YOUR LICENSE EXAMINATION

The following suggestions will help you prepare for your examination.

- Planned preparation increases your likelihood of passing.
- Start with a current copy of this Candidate Information Bulletin and use the examination content outline as the basis of your study.
- Read study materials that cover all the topics in the content outline.
- Take notes on what you study. Putting information in writing helps you commit it to memory and it is also an excellent business practice. Discuss new terms or concepts as frequently as you can with colleagues. This will test your understanding and reinforce ideas.
- Your studies will be most effective if you study frequently, for periods of about 45 to 60 minutes. Concentration tends to wander when you study for longer periods of time.

EXAMINATION REFERENCE MATERIAL AND CONTENT OUTLINE

If a test question answer could differ because of conflicting information in test reference sources, a legal requirement such as code, law, or regulation overrides any other reference. If two legal requirements appear to conflict, the state-specific code, law, or regulation overrides the national one. Information from sources on the test reference list override information from other sources or persons.

Many of the reference materials listed are available for purchase at www.pSIONlinestore.com or by calling the PSI Online Store, toll-free, at (866) 589-3088.

Titles currently in stock are listed on the order form near the end of this candidate information bulletin.

B01 - Journeyman Boiler Operator

# of Questions	% Required to Pass	Time Allowed
70	75% (53 points)	185 Minutes



CONTENT OUTLINE

Subject Area	# of Items
Burners, Venting and Draft	13
Controls, Boiler Fitting and Accessories	13
Testing and Inspections	13
Applications and Theory	8
Water Treatment	8
Safety	8
Maintenance	7

REFERENCE LIST

The reference materials listed below were used to prepare the questions for this examination. The examination may also contain questions based on trade knowledge or general industry practices. **Except for Code books**, you can base your answers on later editions of references as they become available. For Code questions, the examinations will be based **only** on the edition of the Code book that is listed.

Candidates may use a silent, non-printing, non-programmable calculator in the examination center.

This examination is OPEN BOOK.

The following reference materials are allowed in the examination center:

- *Low Pressure Boilers*, Frederick M. Steingress, Daryl R. Walker, 4th Edition, 2013, American Technical Publishers, Inc., (800) 323-3471, www.atplearning.com
- *New Mexico Boiler Rules and Regulations (NMAC 14.9.4)*, 2005, www.nmcpr.state.nm.us/NMAC, (505) 476-4700

Candidates are responsible for bringing their own references to the examination center. Reference materials must be bound, and may be highlighted, underlined, and/or indexed prior to the examination session. Reference materials containing any writing will **not** be allowed into the examination. References may not be written in during the examination session. Any candidate caught writing in the references during the examination will have the references confiscated and will be reported to the department. Furthermore, candidates are not permitted to bring in any additional papers (loose or attached) with their approved references. Any additional materials will be removed from the references and confiscated. References may be tabbed/indexed with permanent tabs only. Temporary tabs, such as Post-It notes, are not allowed and must be removed from the reference before the examination begins.

B02 - Journeyman Boiler Operator

# of Questions	% Required to Pass	Time Allowed
50	75% (38 points)	185 Minutes

CONTENT OUTLINE

Subject Area	# of Items
Burners, Venting and Draft	10
Controls, Boiler Fitting and Accessories	10
Testing and Inspections	10

Application and Theory	10
Maintenance/Water Treat	6
Safety	4

REFERENCE LIST

The reference materials listed below were used to prepare the questions for this examination. The examination may also contain questions based on trade knowledge or general industry practices. **Except for Code books**, you can base your answers on later editions of references as they become available. For Code questions, the examinations will be based **only** on the edition of the Code book that is listed.

Candidates may use a silent, non-printing, non-programmable calculator in the examination center.

This examination is OPEN BOOK.

The following reference materials are allowed in the examination center:

- *Low Pressure Boilers*, Frederick M. Steingress, Daryl R. Walker, 4th Edition, 2013, American Technical Publishers, Inc., (800) 323-3471, www.atplearning.com
- *High Pressure Boilers*, Steingress, Frost, and Walker, 2012, 5th edition, American Technical Publishers, Inc., (800) 323-3471, www.go2atp.com
- *New Mexico Boiler Rules and Regulations (NMAC 14.9.4)*, 2005, www.nmcpr.state.nm.us/NMAC, (505) 476-4700

Candidates are responsible for bringing their own references to the examination center. Reference materials must be bound, and may be highlighted, underlined, and/or indexed prior to the examination session. Reference materials containing any writing will **not** be allowed into the examination. References may not be written in during the examination session. Any candidate caught writing in the references during the examination will have the references confiscated and will be reported to the department. Furthermore, candidates are not permitted to bring in any additional papers (loose or attached) with their approved references. Any additional materials will be removed from the references and confiscated. References may be tabbed/indexed with permanent tabs only. Temporary tabs, such as Post-It notes, are not allowed and must be removed from the reference before the examination begins.

ER-1J Journeyman Residential Electrical Wiring Part 1 Code Examination

# of Questions	% Required to Pass	Time Allowed
40	75% (30 points)	90 minutes

CONTENT OUTLINE

Subject Area	# of Items
General Knowledge and Electrical Installation Requirements	5
Services, Feeders, and Branch Circuits	6
Overcurrent Protection	4
Grounding and Bonding	4
Conductors and Cables	6
Raceways and Boxes	4



Special Occupancies and Special Equipment, including Pools	2
Lighting and General-Use Equipment	2
New Mexico State Code	5
Low Voltage	2

REFERENCE LIST

The reference materials listed below were used to prepare the questions for this examination. The examination may also contain questions based on trade knowledge or general industry practices. **Except for Code books**, you can base your answers on later editions of references as they become available. For Code questions, the examinations will be based **only** on the edition of the Code book that is listed.

Candidates may use a silent, non-printing, non-programmable calculator in the examination center.

This examination is OPEN BOOK.

The following reference materials are allowed in the examination center:

- *NFPA 70 - National Electrical Code, 2014, or The National Electrical Code Handbook*, National Fire Protection Association (NFPA), (800) 344-3555, www.nfpa.org
- *New Mexico Electrical Code (NMAC 14.10.4)*, 2014, www.nmcpr.state.nm.us/NMAC, (505) 476-4700

Candidates are responsible for bringing their own references to the examination center. Reference materials must be bound, and may be highlighted, underlined, and/or indexed prior to the examination session. Reference materials containing any writing will not be allowed into the examination. References may not be written in during the examination session. Any candidate caught writing in the references during the examination will have the references confiscated and will be reported to the department. Furthermore, candidates are not permitted to bring in any additional papers (loose or attached) with their approved references. Any additional materials will be removed from the references and confiscated. References may be tabbed/indexed with permanent tabs only. Temporary tabs, such as Post-It notes, are not allowed and must be removed from the reference before the examination begins.

ER-1J Journeyman Residential Electrical Wiring Part 2 Theory Examination

# of Questions	% Required to Pass	Time Allowed
25	75% (19 points)	60 minutes

CONTENT OUTLINE

Subject Area	# of Items
General Knowledge and Electrical Installation Requirements	9
Services, Feeders, and Branch Circuits	4
Overcurrent Protection	2
Grounding and Bonding	2
Conductors and Cables	2
Raceways and Boxes	2
Special Occupancies and Special Equipment,	1

including Pools	
Lighting and General-Use Equipment	1
Low Voltage	2

REFERENCE LIST

The reference materials listed below were used to prepare the questions for this examination. The examination may also contain questions based on trade knowledge or general industry practices. **Except for Code books**, you can base your answers on later editions of references as they become available. For Code questions, the examinations will be based **only** on the edition of the Code book that is listed.

Candidates may use a silent, non-printing, non-programmable calculator in the examination center.

This examination is CLOSED BOOK.

The following reference materials are not allowed in the examination center:

- *NFPA 70 - National Electrical Code, 2014, or The National Electrical Code Handbook*, National Fire Protection Association (NFPA), (800) 344-3555, www.nfpa.org
- *New Mexico Electrical Code (NMAC 14.10.4)*, 2014, www.nmcpr.state.nm.us/NMAC, (505) 476-4700
- *American Electricians' Handbook*, 16th Edition, 2013, McGraw-Hill, (800) 262-4729, www.books.mcgraw-hill.com
- *Ugly's Electrical References*, George V. Hart, 2008 or 2011, Jones and Bartlett, (800) 832-0034, www.uglys.net. All items are based on either the 2008 or 2011 editions.

Journeyman Residential Electrical Practical Examination

# of Points	% Required to Pass	Time Allowed
100	75% (75 points)	120 minutes

CONTENT OUTLINE

Subject Area	# of Points
Doorbell Project	35
Lighting Project	35
Simple Conduit Bending	20
Materials Identification	10

EE-98J Journeyman Residential and Commercial Electrical Part 1 Code Examination

# of Questions	% Required to Pass	Time Allowed
50	75% (38 points)	145 minutes



CONTENT OUTLINE

Subject Area	# of Items
General Knowledge and Electrical Installation Requirements	4
Services, Feeders, and Branch Circuits	7
Overcurrent Protection	4
Grounding and Bonding	6
Conductors and Cables	5
Raceways and Boxes	5
Hazardous Locations, Special Occupancies, and Special Equipment	4
Lighting, Signs, and General-Use Equipment	3
Motors, Transformers, and Generators	5
NM State Code	4
Low Voltage	3

REFERENCE LIST

The reference materials listed below were used to prepare the questions for this examination. The examination may also contain questions based on trade knowledge or general industry practices. **Except for Code books**, you can base your answers on later editions of references as they become available. For Code questions, the examinations will be based **only** on the edition of the Code book that is listed.

Candidates may use a silent, non-printing, non-programmable calculator in the examination center.

This examination is OPEN BOOK.

The following reference materials are allowed in the examination center:

- *NFPA 70 - National Electrical Code, 2014, or The National Electrical Code Handbook*, National Fire Protection Association (NFPA), (800) 344-3555, www.nfpa.org
- *New Mexico Electrical Code (NMAC 14.10.4)*, 2014, www.nmcpr.state.nm.us/NMAC, (505) 476-4700
- *National Electrical Safety Code, 2007*, Institute of Electrical and Electronics Engineers, Inc., (732) 981-0060, www.ieee.org

The following reference materials are not allowed in the examination center:

- *Alternating Current Fundamentals*, John R. Duff and Stephen L. Herman, 2000, 6th Edition, Delmar/Thomson Learning, (800) 347-7707, www.delmarlearning.com,
- *Lineman's and Cableman's Handbook*, Shoemaker and Mack, 12th Edition, 2011, McGraw Hill, 800-262-4729, shop.mcgraw-hill.com

Candidates are responsible for bringing their own references to the examination center. Reference materials must be bound, and may be highlighted, underlined, and/or indexed prior to the examination session. Reference materials containing any writing will not be allowed into the examination. References may not be written in during the examination session. Any candidate caught writing in the references during the examination will have the references confiscated and will be reported to the department. Furthermore, candidates are not permitted to bring in any additional papers (loose or attached) with their approved references. Any additional materials will

be removed from the references and confiscated. References may be tabbed/indexed with permanent tabs only. Temporary tabs, such as Post-It notes, are not allowed and must be removed from the reference before the examination begins.

EE-98J Journeyman Residential and Commercial Electrical Part 2 Theory Examination

# of Questions	% Required to Pass	Time Allowed
50	75% (38 points)	135 minutes

CONTENT OUTLINE

Subject Area	# of Items
General Knowledge and Electrical Installation Requirements	18
Services, Feeders, and Branch Circuits	5
Overcurrent Protection	4
Grounding and Bonding	5
Conductors and Cables	3
Raceways and Boxes	3
Hazardous Locations, Special Occupancies, and Special Equipment	2
Lighting, Signs, and General-Use Equipment	2
Low Voltage, including Alarms	8

REFERENCE LIST

The reference materials listed below were used to prepare the questions for this examination. The examination may also contain questions based on trade knowledge or general industry practices. **Except for Code books**, you can base your answers on later editions of references as they become available. For Code questions, the examinations will be based **only** on the edition of the Code book that is listed.

Candidates may use a silent, non-printing, non-programmable calculator in the examination center.

This examination is CLOSED BOOK.

The following reference materials are not allowed in the examination center:

- *NFPA 70 - National Electrical Code, 2014, or The National Electrical Code Handbook*, National Fire Protection Association (NFPA), (800) 344-3555, www.nfpa.org
- *American Electricians' Handbook*, 16th Edition, 2013, McGraw-Hill, (800) 262-4729, www.books.mcgraw-hill.com
- *Ugly's Electrical References*, George V. Hart, 2008 or 2011, Jones and Bartlett, (800) 832-0034, www.uglys.net. All items are based on either the 2008 or 2011 editions.
- *NFPA 72 - National Fire Alarm Code, 2010*, National Fire Protection Association (NFPA), (800) 344-3555, www.nfpa.org
- *Cathodic Protection*, John Morgan, 1987, 2nd Edition, National Association of Corrosion Engineers, (800) 797-6223, www.nace.org
- *Low Voltage Wiring: Security/Fire Alarm Systems*, John E. Traister and Terry Kennedy, 2002, 3rd Edition, McGraw-Hill, (800) 262-4729, www.books.mcgraw-hill.com



- *Telecommunications Wiring*, Clyde Herrick, 2001, 3rd Edition, Prentice-Hall PTR, (800) 382-3419, www.prenhall.com
- *Live Sound Reinforcement: A Comprehensive Guide to P.A. and Music Reinforcement Systems and Technology*, Scott Hunter Stark, 2002, 2nd Edition, (707) 554-1935, www.courseptr.com/artistpro
- *Data, Voice, and Video Cabling*, 3rd Edition, 2009, The Fiber Optic Association, Jim Hayes and Paul Rosenberg, www.cengage.com
- *CCTV: Networking and Digital Technology*, Vlado Damjanovski, 2005, 2nd Edition, Butterworth-Heinemann (Reed Publishing), (800) 545-2522, www.bh.com
- *Lineman's and Cableman's Handbook*, Shoemaker and Mack, 12th Edition, 2011, McGraw Hill, 800-262-4729, shop.mcgraw-hill.com
- *National Electrical Safety Code*, 2007, Institute of Electrical and Electronics Engineers, Inc., (732) 981-0060, www.ieee.org

REFERENCE LIST

The reference materials listed below were used to prepare the questions for this examination. The examination may also contain questions based on trade knowledge or general industry practices. **Except for Code books**, you can base your answers on later editions of references as they become available. For Code questions, the examinations will be based **only** on the edition of the Code book that is listed.

Candidates may use a silent, non-printing, non-programmable calculator in the examination center.

This examination is OPEN BOOK.

The following reference materials are allowed in the examination center:

- *National Electrical Safety Code Handbook*, David J. Marne, 2007, McGraw-Hill, (800) 262-4729, www.books.mcgraw-hill.com
- *NFPA 70 - National Electrical Code, 2014, or The National Electrical Code Handbook*, National Fire Protection Association (NFPA), (800) 344-3555, www.nfpa.org
- *New Mexico Electrical Code (NMAC 14.10.4)*, 2014, www.nmcpr.state.nm.us/NMAC, (505) 476-4700
- *New Mexico Electrical Safety Code (NMAC 14.10.5)*, 2008, www.nmcpr.state.nm.us/NMAC, (505) 476-4700

The following reference materials are not allowed in the examination center:

- *American Electricians' Handbook*, 16th Edition, 2013, McGraw-Hill, (800) 262-4729, www.books.mcgraw-hill.com
- *Lineman's and Cableman's Handbook*, Shoemaker and Mack, 12th Edition, 2011, McGraw Hill, 800-262-4729, shop.mcgraw-hill.com

Candidates are responsible for bringing their own references to the examination center. Reference materials must be bound, and may be highlighted, underlined, and/or indexed prior to the examination session. Reference materials containing any writing will **not** be allowed into the examination. References may not be written in during the examination session. Any candidate caught writing in the references during the examination will have the references confiscated and will be reported to the department. Furthermore, candidates are not permitted to bring in any additional papers (loose or attached) with their approved references. Any additional materials will be removed from the references and confiscated. References may be tabbed/indexed with permanent tabs only. Temporary tabs, such as Post-It notes, are not allowed and must be removed from the reference before the examination begins.

ES-1J Journeyman Electrical Signs and Outline Lighting

# of Questions	% Required to Pass	Time Allowed
50	75% (38 points)	120 Minutes

CONTENT OUTLINE

Subject Area	# of Items
General Knowledge and Theory	5
Wiring and Protection	15

Journeyman Residential and Commercial Electrical Practical Examination

# of Points	% Required to Pass	Time Allowed
100	75% (75 points)	120 minutes

CONTENT OUTLINE

Subject Area	# of Points
Motor Control Project	20
Transformer Project	20
Doorbell Project	10
Lighting Project	10
Simple Conduit Bending	10
Complex Conduit Bending	20
Materials Identification	10

EL-1J Journeyman Electrical Distribution Systems, including Transmission Lines

# of Questions	% Required to Pass	Time Allowed
80	75% (60 points)	205 Minutes

CONTENT OUTLINE

Subject Area	# of Items
General Electrical Knowledge	10
Electrical Supply/Sub-Stations	8
Transformers	10
Conductors	8
Poles and Structures	6
Grounding Methods	8
Overhead	8
Underground	6
Equipment and Safety	6
Equipment over 600 Volts	10

Wiring Methods and Material	15
Equipment For General Use	5
Special Occupancies	5
Special Equipment	5

REFERENCE LIST

The reference materials listed below were used to prepare the questions for this examination. The examination may also contain questions based on trade knowledge or general industry practices. **Except for Code books**, you can base your answers on later editions of references as they become available. For Code questions, the examinations will be based **only** on the edition of the Code book that is listed.

Candidates may use a silent, non-printing, non-programmable calculator in the examination center.

This examination is OPEN BOOK.

The following reference materials are allowed in the examination center:

- *NFPA 70 - National Electrical Code, 2014, or The National Electrical Code Handbook*, National Fire Protection Association (NFPA), (800) 344-3555, www.nfpa.org
- *New Mexico Electrical Code (NMAC 14.10.4)*, 2014, www.nmcpr.state.nm.us/NMAC, (505) 476-4700

The following reference materials are not allowed in the examination center:

- *Neon Techniques*, Wayne Strattman, 2003, 4th edition, ST Publications, Inc., (800) 925-1110, www.stpubs.com
- *American Electricians' Handbook*, 16th Edition, 2013, McGraw-Hill, (800) 262-4729, www.books.mcgraw-hill.com

Candidates are responsible for bringing their own references to the examination center. Reference materials must be bound, and may be highlighted, underlined, and/or indexed prior to the examination session. Reference materials containing any writing will **not** be allowed into the examination. References may not be written in during the examination session. Any candidate caught writing in the references during the examination will have the references confiscated and will be reported to the department. Furthermore, candidates are not permitted to bring in any additional papers (loose or attached) with their approved references. Any additional materials will be removed from the references and confiscated. References may be tabbed/indexed with permanent tabs only. Temporary tabs, such as Post-It notes, are not allowed and must be removed from the reference before the examination begins.

ES-2J Journeyman Cathodic Protection, and Lightning Protection Systems

# of Questions	% Required to Pass	Time Allowed
50	75% (38 points)	120 Minutes

CONTENT OUTLINE

Subject Area	# of Items
General Knowledge and Theory	20
National Electrical Code	10
Lightning Protection	10
Cathodic Protection	10

REFERENCE LIST

The reference materials listed below were used to prepare the questions for this examination. The examination may also contain questions based on trade knowledge or general industry practices. **Except for Code books**, you can base your answers on later editions of references as they become available. For Code questions, the examinations will be based **only** on the edition of the Code book that is listed.

Candidates may use a silent, non-printing, non-programmable calculator in the examination center.

This examination is OPEN BOOK.

The following reference materials are allowed in the examination center:

- *NFPA 70 - National Electrical Code, 2014, or The National Electrical Code Handbook*, National Fire Protection Association (NFPA), (800) 344-3555, www.nfpa.org
- *New Mexico Electrical Code (NMAC 14.10.4)*, 2014, www.nmcpr.state.nm.us/NMAC, (505) 476-4700
- *NFPA 780 - Installation of Lightning Protection Systems, 2004*, National Fire Protection Association (NFPA), (800) 344-3555, www.nfpa.org

The following reference materials are not allowed in the examination center:

- *American Electricians' Handbook*, 16th Edition, 2013, McGraw-Hill, (800) 262-4729, www.books.mcgraw-hill.com
- *Ugly's Electrical References*, George V. Hart, 2008 or 2011, Jones and Bartlett, (800) 832-0034, www.uglys.net. All items are based on either the 2008 or 2011 editions.
- *Handbook of Cathodic Corrosion Protection*, 3rd Edition, 1997, W. Von Baekmann, Gulf Publishing Company, (715) 529-4301, www.gulfpub.com
- *Control of Pipeline Corrosion*, 2nd Edition, 2001, National Association of Corrosion Engineers, (800) 797-6223, <http://www.nace.org>

Candidates are responsible for bringing their own references to the examination center. Reference materials must be bound, and may be highlighted, underlined, and/or indexed prior to the examination session. Reference materials containing any writing will **not** be allowed into the examination. References may not be written in during the examination session. Any candidate caught writing in the references during the examination will have the references confiscated and will be reported to the department. Furthermore, candidates are not permitted to bring in any additional papers (loose or attached) with their approved references. Any additional materials will be removed from the references and confiscated. References may be tabbed/indexed with permanent tabs only. Temporary tabs, such as Post-It notes, are not allowed and must be removed from the reference before the examination begins.



**ES-3J Journeyman Low Voltage Special Systems
(under 50 Volts)**

# of Questions	% Required to Pass	Time Allowed
50	75% (38 points)	145 Minutes

CONTENT OUTLINE

Subject Area	# of Items
Grounding and Bonding	5
Conductors	4
Electrical Power Conditioning	2
Electrical and Electronic Knowledge	9
General Low Voltage	3
Sound and Video Systems	5
Intrusion Detection and Alarms	4
Fire Detection and Alarms	7
Computer and Data Systems	5
CCTV Systems	2
Testing Equipment	2
CATV and MATV Systems	2

REFERENCE LIST

The reference materials listed below were used to prepare the questions for this examination. The examination may also contain questions based on trade knowledge or general industry practices. **Except for Code books**, you can base your answers on later editions of references as they become available. For Code questions, the examinations will be based **only** on the edition of the Code book that is listed.

Candidates may use a silent, non-printing, non-programmable calculator in the examination center.

This examination is OPEN BOOK.

The following reference materials are allowed in the examination center:

- *NFPA 70 - National Electrical Code, 2014, or The National Electrical Code Handbook*, National Fire Protection Association (NFPA), (800) 344-3555, www.nfpa.org
- *NFPA 72 - National Fire Alarm Code*, 2010, National Fire Protection Association (NFPA), (800) 344-3555, www.nfpa.org
- *New Mexico Electrical Code (NMAC 14.10.4)*, 2014, www.nmcpr.state.nm.us/NMAC, (505) 476-4700

The following reference materials are not allowed in the examination center:

- *Low Voltage Wiring: Security/Fire Alarm Systems*, John E. Traister and Terry Kennedy, 2002, 3rd Edition, McGraw-Hill, (800) 262-4729, www.books.mcgraw-hill.com
- *Telecommunications Wiring*, Clyde Herrick, 2001, 3rd Edition, Prentice-Hall PTR, (800) 382-3419, www.prenhall.com
- *Understanding and Servicing Alarm Systems*, 1999, 3rd Edition, Butterworth-Heinemann (Reed Publishing), (800) 545-2522, www.bh.com

- *Live Sound Reinforcement: A Comprehensive Guide to P.A. and Music Reinforcement Systems and Technology*, Scott Hunter Stark, 2002, 2nd Edition, (707) 554-1935, www.courseptr.com/artistpro
- *Data, Voice, and Video Cabling*, 3rd Edition, 2009, The Fiber Optic Association, Jim Hayes and Paul Rosenberg, www.cengage.com
- *Antenna Toolkit*, Joe Carr, 2001, 2nd edition, Butterworth-Heinemann (Reed Publishing), (800) 545-2522, www.bh.com

Candidates are responsible for bringing their own references to the examination center. Reference materials must be bound, and may be highlighted, underlined, and/or indexed prior to the examination session. Reference materials containing any writing will **not** be allowed into the examination. References may not be written in during the examination session. Any candidate caught writing in the references during the examination will have the references confiscated and will be reported to the department. Furthermore, candidates are not permitted to bring in any additional papers (loose or attached) with their approved references. Any additional materials will be removed from the references and confiscated. References may be tabbed/indexed with permanent tabs only. Temporary tabs, such as Post-It notes, are not allowed and must be removed from the reference before the examination begins.

ES-7J Journeyman Telephone Communication Systems and Telephone Interconnect Systems

# of Questions	% Required to Pass	Time Allowed
50	75% (38 points)	135 Minutes

CONTENT OUTLINE

Subject Area	# of Items
Grounding and Bonding	5
Conductors	5
Special Occupancies and Equipment	2
General Electrical Knowledge	5
Communication Systems	5
Outside Cabling	5
Cable Transmission and Reception	2
Poles	2
Inside Cabling	5
Network/Data	5
Switching	2
Telephones	3
Underground Cabling	4

REFERENCE LIST

The reference materials listed below were used to prepare the questions for this examination. The examination may also contain questions based on trade knowledge or general industry practices. **Except for Code books**, you can base your answers on later editions of references as they become available. For Code questions, the examinations will be based **only** on the edition of the Code book that is listed.

Candidates may use a silent, non-printing, non-programmable calculator in the examination center.



This examination is OPEN BOOK.

The following reference materials are allowed in the examination center:

- NFPA 70 - National Electrical Code, 2014, or The National Electrical Code Handbook, National Fire Protection Association (NFPA), (800) 344-3555, www.nfpa.org
- New Mexico Electrical Code (NMAC 14.10.4), 2014, www.nmcpr.state.nm.us/NMAC, (505) 476-4700
- National Electrical Safety Code - C2, 2007, Institute of Electrical and Electronics Engineers, Inc., (732) 981-0060, www.ieee.org

The following reference materials are not allowed in the examination center:

- Telecommunications Wiring, Clyde Herrick, 2001, 3rd Edition, Prentice-Hall PTR, (800) 382-3419, www.prenhall.com
- Lineman's and Cableman's Handbook, Shoemaker and Mack, 12th Edition, 2011, McGraw Hill, 800-262-4729, shop.mcgraw-hill.com
- Direct Current Fundamentals, Stephen L. Herman, 2006, 7th edition, Thomson Delmar Learning, (800) 347-7707, www.delmarlearning.com
- Live Sound Reinforcement: A Comprehensive Guide to P.A. and Music Reinforcement Systems and Technology, Scott Hunter Stark, 2002, 2nd Edition, (707) 554-1935, www.courseptr.com/artistpro
- Data, Voice, and Video Cabling, 3rd Edition, 2009, The Fiber Optic Association, Jim Hayes and Paul Rosenberg, www.cengage.com

Candidates are responsible for bringing their own references to the examination center. Reference materials must be bound, and may be highlighted, underlined, and/or indexed prior to the examination session. Reference materials containing any writing will not be allowed into the examination. References may not be written in during the examination session. Any candidate caught writing in the references during the examination will have the references confiscated and will be reported to the department. Furthermore, candidates are not permitted to bring in any additional papers (loose or attached) with their approved references. Any additional materials will be removed from the references and confiscated. References may be tabbed/indexed with permanent tabs only. Temporary tabs, such as Post-It notes, are not allowed and must be removed from the reference before the examination begins.

ES-10J Journeyman Water Well Pump Installer

# of Questions	% Required to Pass	Time Allowed
50	75% (38 points)	120 Minutes

CONTENT OUTLINE

Subject Area	# of Items
General Knowledge and Electrical Installation Requirements	8
Feeders and Branch Circuits	4
Overcurrent Protection	3
Grounding and Bonding	8
Conductors and Cables	5

Raceways and Boxes	5
Panelboards and Switchboards	5
Motors, Pumps, and Controls	6
Solar PV Systems	3
New Mexico Electrical Code	3

REFERENCE LIST

The reference materials listed below were used to prepare the questions for this examination. The examination may also contain questions based on trade knowledge or general industry practices. **Except for Code books**, you can base your answers on later editions of references as they become available. For Code questions, the examinations will be based **only** on the edition of the Code book that is listed.

Candidates may use a silent, non-printing, non-programmable calculator in the examination center.

This examination is OPEN BOOK.

The following reference materials are allowed in the examination center:

- NFPA 70 - National Electrical Code, 2014, or The National Electrical Code Handbook, National Fire Protection Association (NFPA), (800) 344-3555, www.nfpa.org
- New Mexico Electrical Code (NMAC 14.10.4), 2014, www.nmcpr.state.nm.us/NMAC, (505) 476-4700
- National Electrical Safety Code, 2007, Institute of Electrical and Electronics Engineers, Inc., (732) 981-0060, www.ieee.org

The following reference materials are not allowed in the examination center:

- American Electricians' Handbook, 16th Edition, 2013, McGraw- Hill, (800) 262-4729, www.books.mcgraw-hill.com
- Ugly's Electrical References, George V. Hart, 2008 or 2011, Jones and Bartlett, (800) 832-0034, www.uglys.net. All items are based on either the 2008 or 2011 editions.

Candidates are responsible for bringing their own references to the examination center. Reference materials must be bound, and may be highlighted, underlined, and/or indexed prior to the examination session. Reference materials containing any writing will not be allowed into the examination. References may not be written in during the examination session. Any candidate caught writing in the references during the examination will have the references confiscated and will be reported to the department. Furthermore, candidates are not permitted to bring in any additional papers (loose or attached) with their approved references. Any additional materials will be removed from the references and confiscated. References may be tabbed/indexed with permanent tabs only. Temporary tabs, such as Post-It notes, are not allowed and must be removed from the reference before the examination begins.

ES-10RJ Journeyman Residential Water Well Pump Installer

# of Questions	% Required to Pass	Time Allowed
50	75% (38 points)	120 Minutes



CONTENT OUTLINE

Subject Area	# of Items
General Knowledge and Electrical Installation Requirements	9
Feeders and Branch Circuits	5
Overcurrent Protection	3
Grounding and Bonding	9
Conductors and Cables	5
Raceways and Boxes	5
Panelboards and Switchboards	3
Motors, Pumps, and Controls	5
Solar PV Systems	3
New Mexico Electrical Code	3

REFERENCE LIST

The reference materials listed below were used to prepare the questions for this examination. The examination may also contain questions based on trade knowledge or general industry practices. **Except for Code books**, you can base your answers on later editions of references as they become available. For Code questions, the examinations will be based **only** on the edition of the Code book that is listed.

Candidates may use a silent, non-printing, non-programmable calculator in the examination center.

This examination is OPEN BOOK.

The following reference materials are allowed in the examination center:

- *NFPA 70 - National Electrical Code, 2014, or The National Electrical Code Handbook*, National Fire Protection Association (NFPA), (800) 344-3555, www.nfpa.org
- *New Mexico Electrical Code (NMAC 14.10.4)*, 2014, www.nmcpr.state.nm.us/NMAC, (505) 476-4700
- *National Electrical Safety Code*, 2007, Institute of Electrical and Electronics Engineers, Inc., (732) 981-0060, www.ieee.org

The following reference materials are not allowed in the examination center:

- *American Electricians' Handbook*, 16th Edition, 2013, McGraw-Hill, (800) 262-4729, www.books.mcgraw-hill.com.
- *Ugly's Electrical References*, George V. Hart, 2008 or 2011, Jones and Bartlett, (800) 832-0034, www.uglys.net. All items are based on either the 2008 or 2011 editions.

Candidates are responsible for bringing their own references to the examination center. Reference materials must be bound, and may be highlighted, underlined, and/or indexed prior to the examination session. Reference materials containing any writing will not be allowed into the examination. References may not be written in during the examination session. Any candidate caught writing in the references during the examination will have the references confiscated and will be reported to the department. Furthermore, candidates are not permitted to bring in any additional papers (loose or attached) with their approved references. Any additional materials will be removed from the references and confiscated. References

may be tabbed/indexed with permanent tabs only. Temporary tabs, such as Post-It notes, are not allowed and must be removed from the reference before the examination begins.

JG Journeyman Natural Gas Fitter

# of Questions	% Required to Pass	Time Allowed
70	75% (53 points)	185 minutes

CONTENT OUTLINE

Subject Area	# of Items
General Knowledge and Principles	12
Piping	17
Gas Sizing	12
Controls and Testing	5
Appliances	7
Combustion Air	7
Chimneys, Flues and Vents	7
Heating Systems	3

REFERENCE LIST

The reference materials listed below were used to prepare the questions for this examination. The examination may also contain questions based on trade knowledge or general industry practices. **Except for Code books**, you can base your answers on later editions of references as they become available. For Code questions, the examinations will be based **only** on the edition of the Code book that is listed.

Candidates may use a silent, non-printing, non-programmable calculator in the examination center.

This examination is OPEN BOOK.

The following reference materials are allowed in the examination center

- *Uniform Mechanical Code*, 2009, International Association of Plumbing and Mechanical Officials (IAPMO), (800) 854-2766, www.iapmo.org.
- *Modern Refrigeration and Air Conditioning*, 2014 Edition, The Goodheart-Willcox Company, (800) 323-0440, www.goodheartwillcox.com
- *IPT's Pipe Trades Handbook*, Robert A. Lee, 1991, IPT Publishing and Training, Ltd., (888) 808-6763, www.iptbooks.com
- *Uniform Plumbing Code*, 2009, International Association of Plumbing and Mechanical Officials (IAPMO), (800) 854-2766, www.iapmo.org.
- *New Mexico Plumbing Code (NMAC 14.8.2)*, 2009, www.nmcpr.state.nm.us/NMAC, (505) 476-4700
- *New Mexico Mechanical Code (NMAC 14.9.2)*, 2009, www.nmcpr.state.nm.us/NMAC, (505) 476-4700

Candidates are responsible for bringing their own references to the examination center. Reference materials must be bound, and may be highlighted, underlined, and/or indexed prior to the examination session. Reference materials containing any writing will not be allowed into the examination. References may not be written in during the examination session. Any candidate caught writing in the references during the examination will have the references confiscated and will be



reported to the department. Furthermore, candidates are not permitted to bring in any additional papers (loose or attached) with their approved references. Any additional materials will be removed from the references and confiscated. References may be tabbed/indexed with permanent tabs only. Temporary tabs, such as Post-It notes, are not allowed and must be removed from the reference before the examination begins.

- *Uniform Mechanical Code*, 2009, International Association of Plumbing and Mechanical Officials (IAPMO), (800) 854-2766, www.iapmo.org.

Candidates are responsible for bringing their own references to the examination center. Reference materials must be bound, and may be highlighted, underlined, and/or indexed prior to the examination session. Reference materials containing any writing will not be allowed into the examination. References may not be written in during the examination session. Any candidate caught writing in the references during the examination will have the references confiscated and will be reported to the department. Furthermore, candidates are not permitted to bring in any additional papers (loose or attached) with their approved references. Any additional materials will be removed from the references and confiscated. References may be tabbed/indexed with permanent tabs only. Temporary tabs, such as Post-It notes, are not allowed and must be removed from the reference before the examination begins.

Journeyman Natural Gas Fitter Practical Examination

# of Points	% Required to Pass	Time Allowed
100	75% (75 points)	120 minutes

CONTENT OUTLINE

Subject Area	# of Points
Natural Gas Project	
Light burner and analyze frame	5
Derate for Altitude	10
Relight burner & make final adjustments	5
Steel Pipe Project	
Cut, ream, and thread pipe	5
Correct use of fitting/tools	5
Correct measurements of assembly	5
Correct location of fittings	5
Fitting Identification	10
Tool Identification	10
Gas Vent Project	
Correctly size vent for single appliance	10
Correctly size vent for two or more appliances	10
Polyethylene Pipe Rise Project	
Correctly assemble gas riser/P.E. pipe	5
Install test manifold	5
Test assembly	5
Brief explanation of proper installation	5

REFERENCE LIST

The reference materials listed below were used to prepare the questions for this examination. The examination may also contain questions based on trade knowledge or general industry practices. **Except for Code books**, you can base your answers on later editions of references as they become available. For Code questions, the examinations will be based **only** on the edition of the Code book that is listed.

Candidates may use a silent, non-printing, non-programmable calculator in the examination center.

This examination is OPEN BOOK.

The following reference materials are allowed in the examination center

- *New Mexico Plumbing Code* (NMAC 14.8.2), 2009, www.nmcpr.state.nm.us/NMAC, (505) 476-4700
- *Uniform Plumbing Code*, 2009, International Association of Plumbing and Mechanical Officials (IAPMO), (800) 854-2766, www.iapmo.org.
- *New Mexico Mechanical Code* (NMAC 14.9.2), 2009, www.nmcpr.state.nm.us/NMAC, (505) 476-4700

JP Journeyman Plumber

# of Questions	% Required to Pass	Time Allowed
70	75% (53 points)	185 minutes

CONTENT OUTLINE

Subject Area	# of Items
Drainage Waste and Vents	21
Water Supply Systems	6
Backflow Prevention	4
Storm Drainage Systems	4
Plumbing Fixtures, Including Water Heaters, Including Accessibility	8
General Knowledge and General Regulations	10
Interceptors and Traps	4
Isometric Analysis	5
Hydronics	4
Septic and Sewer	4

REFERENCE LIST

The reference materials listed below were used to prepare the questions for this examination. The examination may also contain questions based on trade knowledge or general industry practices. **Except for Code books**, you can base your answers on later editions of references as they become available. For Code questions, the examinations will be based **only** on the edition of the Code book that is listed.

Candidates may use a silent, non-printing, non-programmable calculator in the examination center.

This examination is OPEN BOOK.

The following reference materials are allowed in the examination center

- *New Mexico Plumbing Code* (NMAC 14.8.2), 2009, www.nmcpr.state.nm.us/NMAC, (505) 476-4700
- *Uniform Plumbing Code*, 2009, International Association of Plumbing and Mechanical Officials (IAPMO), (800) 854-2766, www.iapmo.org.



- *New Mexico Mechanical Code* (NMAC 14.9.2), 2009, www.nmcpr.state.nm.us/NMAC, (505) 476-4700
- *IPT's Pipe Trades Handbook*, Robert A. Lee, 1991, IPT Publishing and Training, Ltd., (888) 808-6763, www.iptbooks.com
- *Uniform Mechanical Code*, 2009, International Association of Plumbing and Mechanical Officials (IAPMO), (800) 854-2766, www.iapmo.org

The following reference materials are not allowed in the examination center:

- *Mathematics for Plumbers and Pipefitters*, Lee Smith, 8th Edition, 2013, www.cengage.com
- *New Mexico Liquid Waste Disposal Regulations* (NMAC 20.7.3), 2005, www.nmcpr.state.nm.us/NMAC, (505) 476-4700

Candidates are responsible for bringing their own references to the examination center. Reference materials must be bound, and may be highlighted, underlined, and/or indexed prior to the examination session. Reference materials containing any writing will not be allowed into the examination. References may not be written in during the examination session. Any candidate caught writing in the references during the examination will have the references confiscated and will be reported to the department. Furthermore, candidates are not permitted to bring in any additional papers (loose or attached) with their approved references. Any additional materials will be removed from the references and confiscated. References may be tabbed/indexed with permanent tabs only. Temporary tabs, such as Post-It notes, are not allowed and must be removed from the reference before the examination begins.

Journeyman Plumber Practical Examination

# of Points	% Required to Pass	Time Allowed
100	75% (75 points)	120 minutes

CONTENT OUTLINE

Subject Area	# of Points
Copper/PEX Water Piping Assembly	
Properly solder copper piping and fittings	5
Properly assemble PEX and PEX fittings	5
Air test assembly	10
Tub Assembly	
Assembly of tub drain	5
Water test of tub drain	5
Washer Box Assembly	
Overall assembly of project	15
Fitting Identification	10
Tool Identification	10
Island Vent Assembly	
Measure, cut and ream piping	10
Correct use of fittings	10
Drainage Pipe Project	
Measure and calculate minimum rise	5
Set drain to minimum rise	10

REFERENCE LIST

The reference materials listed below were used to prepare the questions for this examination. The examination may also contain questions based on trade knowledge or general industry practices. **Except for Code books**, you can base your answers on later editions of references as they become available. For Code questions, the examinations will be based **only** on the edition of the Code book that is listed.

Candidates may use a silent, non-printing, non-programmable calculator in the examination center.

This examination is OPEN BOOK.

The following reference materials are allowed in the examination center

- *New Mexico Plumbing Code* (NMAC 14.8.2), 2009 www.nmcpr.state.nm.us/NMAC, (505) 476-4700
- *Uniform Plumbing Code*, 2009, International Association of Plumbing and Mechanical Officials (IAPMO), (800) 854-2766, www.iapmo.org.
- *Uniform Mechanical Code*, 2009, International Association of Plumbing and Mechanical Officials (IAPMO), (800) 854-2766, www.iapmo.org

Candidates are responsible for bringing their own references to the examination center. Reference materials must be bound, and may be highlighted, underlined, and/or indexed prior to the examination session. Reference materials containing any writing will not be allowed into the examination. References may not be written in during the examination session. Any candidate caught writing in the references during the examination will have the references confiscated and will be reported to the department. Furthermore, candidates are not permitted to bring in any additional papers (loose or attached) with their approved references. Any additional materials will be removed from the references and confiscated. References may be tabbed/indexed with permanent tabs only. Temporary tabs, such as Post-It notes, are not allowed and must be removed from the reference before the examination begins.

JPF Journeyman Pipe Fitter

# of Questions	% Required to Pass	Time Allowed
50	75% (38 points)	120 minutes

CONTENT OUTLINE

Subject Area	# of Items
General Knowledge	22
Piping, Assembly and Installation	21
Pipe Welding	7

REFERENCE LIST

The reference materials listed below were used to prepare the questions for this examination. The examination may also contain questions based on trade knowledge or general industry practices. **Except for Code books**, you can base your answers on later editions of references as they become available. For

Code questions, the examinations will be based **only** on the edition of the Code book that is listed.

Candidates may use a silent, non-printing, non-programmable calculator in the examination center.

This examination is OPEN BOOK.

The following reference materials are allowed in the examination center

- *Uniform Mechanical Code*, 2009, International Association of Plumbing and Mechanical Officials (IAPMO), (800) 854-2766, www.iapmo.org.
- *New Mexico Plumbing Code* (NMAC 14.8.2), 2009 www.nmcpr.state.nm.us/NMAC, (505) 476-4700
- *IPT's Pipe Trades Handbook*, Robert A. Lee, 1991, IPT Publishing and Training, Ltd., (888) 808-6763, www.iptbooks.com
- *New Mexico Mechanical Code* (NMAC 14.9.2), 2009 www.nmcpr.state.nm.us/NMAC, (505) 476-4700

Candidates are responsible for bringing their own references to the examination center. Reference materials must be bound, and may be highlighted, underlined, and/or indexed prior to the examination session. Reference materials containing any writing will not be allowed into the examination. References may not be written in during the examination session. Any candidate caught writing in the references during the examination will have the references confiscated and will be reported to the department. Furthermore, candidates are not permitted to bring in any additional papers (loose or attached) with their approved references. Any additional materials will be removed from the references and confiscated. References may be tabbed/indexed with permanent tabs only. Temporary tabs, such as Post-It notes, are not allowed and must be removed from the reference before the examination begins.

JR Journeyman Refrigeration

# of Questions	% Required to Pass	Time Allowed
50	75% (38 points)	120 minutes

CONTENT OUTLINE

Subject Area	# of Items
Refrigerants and Refrigeration	10
Refrigeration - Piping, Hydronics, and Process	18
General Requirements	5
Components, Controls, and Valves	6
Tests and Inspections	6
Safety	5

REFERENCE LIST

The reference materials listed below were used to prepare the questions for this examination. The examination may also contain questions based on trade knowledge or general industry practices. **Except for Code books**, you can base your answers on later editions of references as they become available. For Code questions, the examinations will be based **only** on the edition of the Code book that is listed.

Candidates may use a silent, non-printing, non-programmable calculator in the examination center.

This examination is OPEN BOOK.

The following reference materials are allowed in the examination center

- *New Mexico Mechanical Code* (NMAC 14.9.2), 2009 www.nmcpr.state.nm.us/NMAC, (505) 476-4700
- *New Mexico Plumbing Code* (NMAC 14.8.2), 2009 www.nmcpr.state.nm.us/NMAC, (505) 476-4700
- *Modern Refrigeration and Air Conditioning*, 2014 Edition, The Goodheart-Willcox Company, (800) 323-0440, www.goodheartwillcox.com
- *Uniform Mechanical Code*, 2009, International Association of Plumbing and Mechanical Officials (IAPMO), (800) 854-2766, www.iapmo.org.
- *IPT's Pipe Trades Handbook*, Robert A. Lee, 1991, IPT Publishing and Training, Ltd., (888) 808-6763, www.iptbooks.com
- *Industrial Refrigeration Handbook*, W. F. Stoecker, 1998, McGraw-Hill, (800) 262-4729, www.books.mcgraw-hill.com
- *Code of Federal Regulations - 29 CFR Part 1926 (OSHA)*, with latest available amendments, Superintendent of Documents, PO Box 371954, Pittsburgh, PA 15250-7954, 888-293-6498, <http://www.access.gpo.gov/nara/cfr/cfr-table-search.html#page1>

OR

Code of Federal Regulations - 29 CFR Part 1926 Selections by PSI, with latest available amendments, 3210 E Tropicana, Las Vegas, NV 89121, (800) 733-9267, www.psiexams.com (See order form at the end of the Candidate Information Bulletin.)

Candidates are responsible for bringing their own references to the examination center. Reference materials must be bound, and may be highlighted, underlined, and/or indexed prior to the examination session. Reference materials containing any writing will not be allowed into the examination. References may not be written in during the examination session. Any candidate caught writing in the references during the examination will have the references confiscated and will be reported to the department. Furthermore, candidates are not permitted to bring in any additional papers (loose or attached) with their approved references. Any additional materials will be removed from the references and confiscated. References may be tabbed/indexed with permanent tabs only. Temporary tabs, such as Post-It notes, are not allowed and must be removed from the reference before the examination begins.

JS Journeyman Sprinkler

# of Questions	% Required to Pass	Time Allowed
45	75% (34 points)	120 minutes

CONTENT OUTLINE

Subject Area	# of Items
General Knowledge	9
Design	9
Materials	5
Controls and Wiring	7



Excavation	4
Pumps	3
Water Supply	4
Sprinkler Heads	4

REFERENCE LIST

The reference materials listed below were used to prepare the questions for this examination. The examination may also contain questions based on trade knowledge or general industry practices. **Except for Code books**, you can base your answers on later editions of references as they become available. For Code questions, the examinations will be based **only** on the edition of the Code book that is listed.

Candidates may use a silent, non-printing, non-programmable calculator in the examination center.

This examination is OPEN BOOK.

The following reference materials are allowed in the examination center

- *Simplified Irrigation Design*, Pete Melby, 1995, 2nd edition, John Wiley and Sons, Inc., (201) 748-6000, www.wiley.com

Candidates are responsible for bringing their own references to the examination center. Reference materials must be bound, and may be highlighted, underlined, and/or indexed prior to the examination session. Reference materials containing any writing will not be allowed into the examination. References may not be written in during the examination session. Any candidate caught writing in the references during the examination will have the references confiscated and will be reported to the department. Furthermore, candidates are not permitted to bring in any additional papers (loose or attached) with their approved references. Any additional materials will be removed from the references and confiscated. References may be tabbed/indexed with permanent tabs only. Temporary tabs, such as Post-It notes, are not allowed and must be removed from the reference before the examination begins.

JSM Journeyman Sheet Metal

# of Questions	% Required to Pass	Time Allowed
70	75% (53 points)	185 minutes

CONTENT OUTLINE

Subject Area	# of Items
Duct Fabrication	15
Duct Installation	15
Ventilation, Combustion Air, and Controls	20
General Knowledge	8
Heating and Cooling Appliances	12

REFERENCE LIST

The reference materials listed below were used to prepare the questions for this examination. The examination may also contain questions based on trade knowledge or general industry practices. **Except for Code books**, you can base your

answers on later editions of references as they become available. For Code questions, the examinations will be based **only** on the edition of the Code book that is listed.

Candidates may use a silent, non-printing, non-programmable calculator in the examination center.

This examination is OPEN BOOK.

The following reference materials are allowed in the examination center

- *New Mexico Mechanical Code* (NMAC 14.9.2), 2009, www.nmcpr.state.nm.us/NMAC, (505) 476-4700
- *Modern Refrigeration and Air Conditioning*, 2014 Edition, The Goodheart-Willcox Company, (800) 323-0440, www.goodheartwillcox.com
- *Uniform Mechanical Code*, 2009, International Association of Plumbing and Mechanical Officials (IAPMO), (800) 854-2766, www.iapmo.org.
- *HVAC Duct Construction Standards, Metal and Flexible*, 2005, 3rd edition, Sheet Metal and Air Conditioning Contractors' National Association, Inc., (703) 803-2980, www.smacna.org
- *Sheet Metal*, Leo A. Meyer, 2006, American Technical Publishers, Inc., (800) 323-3471, www.go2atp.com

Candidates are responsible for bringing their own references to the examination center. Reference materials must be bound, and may be highlighted, underlined, and/or indexed prior to the examination session. Reference materials containing any writing will not be allowed into the examination. References may not be written in during the examination session. Any candidate caught writing in the references during the examination will have the references confiscated and will be reported to the department. Furthermore, candidates are not permitted to bring in any additional papers (loose or attached) with their approved references. Any additional materials will be removed from the references and confiscated. References may be tabbed/indexed with permanent tabs only. Temporary tabs, such as Post-It notes, are not allowed and must be removed from the reference before the examination begins.

Journeyman Sheet Metal Practical Examination

# of Points	% Required to Pass	Time Allowed
100	75% (75 points)	120 minutes

CONTENT OUTLINE

Subject Area	# of Points
Field Sketch Scoring	
Accurate Dimensions	15
Correct Duct Length	20
Sizes and Connectors	10
Neatness	5
Mock Up Scoring	
Duct Joint Correct Length	20
Fittings Installed Correctly	20
Properly Installed Connectors	5
Overall Appearance	5



REFERENCE LIST

The reference materials listed below were used to prepare the questions for this examination. The examination may also contain questions based on trade knowledge or general industry practices. **Except for Code books**, you can base your answers on later editions of references as they become available. For Code questions, the examinations will be based **only** on the edition of the Code book that is listed.

Candidates may use a silent, non-printing, non-programmable calculator in the examination center.

This examination is OPEN BOOK.

The following reference materials are allowed in the examination center

- *New Mexico Mechanical Code (NMAC 14.9.2), 2009, www.nmcpr.state.nm.us/NMAC, (505) 476-4700*
- *Uniform Mechanical Code, 2009, International Association of Plumbing and Mechanical Officials (IAPMO), (800) 854-2766, www.iapmo.org.*

Candidates are responsible for bringing their own references to the examination center. Reference materials must be bound, and may be highlighted, underlined, and/or indexed prior to the examination session. Reference materials containing any writing will not be allowed into the examination. References may not be written in during the examination session. Any candidate caught writing in the references during the examination will have the references confiscated and will be reported to the department. Furthermore, candidates are not permitted to bring in any additional papers (loose or attached) with their approved references. Any additional materials will be removed from the references and confiscated. References may be tabbed/indexed with permanent tabs only. Temporary tabs, such as Post-It notes, are not allowed and must be removed from the reference before the examination begins.

MS-12J Journeyman Fire Protection Systems

# of Questions	% Required to Pass	Time Allowed
50	75% (38 points)	110 Minutes

CONTENT OUTLINE

Subject Area	# of Items
Backflow Prevention	2
Hydraulic Calculations and Design	2
Residential Systems	3
Firepumps and Standpipes	5
Sprinkler Systems	10
Water Supply, Storage, and Distribution	4
General and Code Knowledge	10
Materials and Methods	4
Testing and Inspections (NFPA 25)	10

REFERENCE LIST

The reference materials listed below were used to prepare the questions for this examination. The examination may also contain questions based on trade knowledge or general industry practices. **Except for Code books**, you can base your answers on later editions of references as they become available. For Code questions, the examinations will be based **only** on the edition of the Code book that is listed.

Candidates may use a silent, non-printing, non-programmable calculator in the examination center.

This examination is OPEN BOOK.

The following reference materials are allowed in the examination center:

- *NFPA 13 - Installation of Sprinkler Systems, 2007, National Fire Protection Association (NFPA), (800) 344-3555, www.nfpa.org*
- *NFPA 72 - National Fire Alarm Code, 2010, National Fire Protection Association (NFPA), (800) 344-3555, www.nfpa.org*
- *NFPA 13R - Sprinkler Systems for Residential Occupancies Up To and Including Four Stories in Height, 2002, National Fire Protection Association (NFPA), (800) 344-3555, www.nfpa.org*
- *NFPA 15 - Water Spray Fixed Systems for Fire Protection, 2007, National Fire Protection Association (NFPA), (800) 344-3555, www.nfpa.org*
- *NFPA 14 - Installation of Standpipe, Private Hydrant, and Hose, 2007, National Fire Protection Association (NFPA), (800) 344-3555, www.nfpa.org*
- *NFPA 20 - Standard for the Installation of Stationary Pumps for Fire Protection, 2007, National Fire Protection Association (NFPA), (800) 344-3555, www.nfpa.org*
- *NFPA 13D - Sprinklers, One- and Two-Family Dwellings and Manufactured Housing, 2002, National Fire Protection Association (NFPA), (800) 344-3555, www.nfpa.org*
- *Uniform Plumbing Code, 2009, International Association of Plumbing and Mechanical Officials (IAPMO), (800) 854-2766, www.iapmo.org.*
- *NFPA 25 - Inspection, Testing, and Maintenance of Water Based Fire Protection Systems, 2002, National Fire Protection Association (NFPA), (800) 344-3555, www.nfpa.org*
- *NFPA 24: Standard for the Installation of Private Fire Service Mains and Their Appurtenances, 2007, National Fire Protection Association (NFPA), (800) 344-3555, www.nfpa.org*

Candidates are responsible for bringing their own references to the examination center. Reference materials must be bound, and may be highlighted, underlined, and/or indexed prior to the examination session. Reference materials containing any writing will not be allowed into the examination. References may not be written in during the examination session. Any candidate caught writing in the references during the examination will have the references confiscated and will be reported to the department. Furthermore, candidates are not permitted to bring in any additional papers (loose or attached) with their approved references. Any additional materials will be removed from the references and confiscated. References may be tabbed/indexed with permanent tabs only. Temporary tabs, such as Post-It notes, are not allowed and must be removed from the reference before the examination begins.

MS-14J Journeyman Dry Chemical Fire Protection

# of Questions	% Required to Pass	Time Allowed
50	75% (38 points)	90 Minutes

CONTENT OUTLINE

Subject Area	# of Items
Clean Agents And Alternative Systems	17
Foam Systems	5
Wet Chemical Systems	8
Dry Chemical Systems	6
Carbon Dioxide Systems	2
Portable Fire Extinguishers	4
Commercial Kitchen Equipment	8

REFERENCE LIST

The reference materials listed below were used to prepare the questions for this examination. The examination may also contain questions based on trade knowledge or general industry practices. **Except for Code books**, you can base your answers on later editions of references as they become available. For Code questions, the examinations will be based **only** on the edition of the Code book that is listed.

Candidates may use a silent, non-printing, non-programmable calculator in the examination center.

This examination is OPEN BOOK.

The following reference materials are allowed in the examination center:

- *NFPA 72 - National Fire Alarm Code*, 2010, National Fire Protection Association (NFPA), (800) 344-3555, www.nfpa.org
- *NFPA 10 - Standard for Portable Fire Extinguishers*, 2007, National Fire Protection Association (NFPA), (800) 344-3555, www.nfpa.org
- *NFPA 11 - Standard for Low-Expansion Foam*, 2005, National Fire Protection Association (NFPA), (800) 344-3555, www.nfpa.org
- *NFPA 12A: Standard on Halon 1301 Fire Extinguishing Systems*, 2009. National Fire Protection Association, 1 Batterymarch Park, P.O. Box 9101, Quincy, MA 02269-9101, www.nfpa.org
- *NFPA 17 - Standard for Dry Chemical Extinguishing Systems*, 2009, National Fire Protection Association (NFPA), (800) 344-3555, www.nfpa.org
- *NFPA 17A - Standard for Wet Chemical Extinguishing Systems*, 2009, National Fire Protection Association (NFPA), (800) 344-3555, www.nfpa.org
- *NFPA 96 - Standard for Ventilation Control and Fire Protection of Commercial Cooking Operations*, 2008, National Fire Protection Association (NFPA), (800) 344-3555, www.nfpa.org
- *Uniform Plumbing Code*, 2009, International Association of Plumbing and Mechanical Officials (IAPMO), (800) 854-2766, www.iapmo.org.

- *Uniform Mechanical Code*, 2009, International Association of Plumbing and Mechanical Officials (IAPMO), (800) 854-2766, www.iapmo.org.
- *NFPA 2001: Standard for Clean Agent Fire Extinguishing Systems*, 2008, National Fire Protection Association (NFPA), (800) 344-3555, www.nfpa.org
- *NFPA 12: Standard on Carbon Dioxide Extinguishing Systems*, 2008, National Fire Protection Association (NFPA), (800) 344-3555, www.nfpa.org

Candidates are responsible for bringing their own references to the examination center. Reference materials must be bound, and may be highlighted, underlined, and/or indexed prior to the examination session. Reference materials containing any writing will not be allowed into the examination. References may not be written in during the examination session. Any candidate caught writing in the references during the examination will have the references confiscated and will be reported to the department. Furthermore, candidates are not permitted to bring in any additional papers (loose or attached) with their approved references. Any additional materials will be removed from the references and confiscated. References may be tabbed/indexed with permanent tabs only. Temporary tabs, such as Post-It notes, are not allowed and must be removed from the reference before the examination begins.

7. **Total Fee \$_____.** You may pay by credit card, money order, company check or cashier's check. Make check or money order made payable to PSI. Cash and personal checks are not accepted.

If paying by credit card, check one: VISA MasterCard American Express Discover

Card No: _____ Exp. Date: _____

Card Verification No: _____ *The card verification number may be located on the back of the card (the last three digits on the signature strip) or on the front of the card (the four digits to the right and above the card account number).*

Billing Street Address: _____ Billing Zip Code: _____

Cardholder Name (Print): _____ Signature: _____

8. I am faxing the Special Arrangement Request (at the end of this bulletin) and required documentation. Yes No

9. **Affidavit:** I certify that the information provided on this registration form (and/or telephonically to PSI) is correct. I understand that any falsification of information may result in denial of licensure. I have read and understand the examination information bulletin.

Signature: _____ Date: _____

IF YOU ARE REGISTERING BY MAIL OR FAX, SIGN AND DATE THIS REGISTRATION FORM ON THE LINES PROVIDED.
Complete and forward this registration form with the applicable examination fee to:
PSI * ATTN: Examination Registration NM JR
3210 E Tropicana * Las Vegas * NV * 89121
Fax (702) 932-2666 * (800) 733-9267 * TTY (800) 735-2929
www.psiexams.com

PSI may occasionally share your information with partners who have offers of interest to you. Please check this box if you do not wish PSI to share your information with these parties. Please note: PSI will never release your ID number or SSN number.



BOOKS AND MORE ARE NOW AVAILABLE AT THE PSI ONLINE STORE!

To place an order for one or more of the following items listed, you may:

- Order online at www.pSIONlinestore.com
- Call the PSI Online store toll-free at (866) 589-3088

Note: prices are available online at www.pSIONlinestore.com

<input type="checkbox"/>	29 CFR Part 1926 Selections
<input type="checkbox"/>	American Electricians' Handbook
<input type="checkbox"/>	NFPA 70 - National Electrical Code
<input type="checkbox"/>	Data, Voice, and Video Cabling
<input type="checkbox"/>	Lineman's and Cableman's Handbook
<input type="checkbox"/>	Low Voltage Wiring Security/Fire Alarm Systems
<input type="checkbox"/>	NFPA 72 - National Fire Alarm Code
<input type="checkbox"/>	Mathematics for Plumbers and Pipefitters
<input type="checkbox"/>	Modern Refrigeration and Air Conditioning

Please note: Inventory and pricing subject to change without notice.

- You may also place a checkmark next to the items that you would like to order, and mail or fax this form to PSI (be sure to include your contact information). A Customer Service Rep will call you to place the order.

Mail or FAX to:
PSI licensure:certification ** 3210 E Tropicana * Las Vegas * NV * 89121 (Attn Shipping)
Fax (702) 932-2668

Name: _____

Address: _____

City _____ State _____ Zip _____

Phone Number: _____



SPECIAL ARRANGEMENT REQUEST FORM OR OUT-OF-STATE TESTING REQUEST

All examination centers are equipped to provide access in accordance with the Americans with Disabilities Act (ADA) of 1990. Applicants with disabilities or those who would otherwise have difficulty taking the examination may request special examination arrangements.

Candidates who wish to request special arrangements because of a disability should fax this form and supporting documentation to PSI at (702) 932-2666.

Requirements for special arrangement requests

You are required to submit documentation from the medical authority or learning institution that rendered a diagnosis. Verification must be submitted to PSI on the letterhead stationery of the authority or specialist and include the following:

- Description of the disability and limitations related to testing
- Recommended accommodation/modification
- Name, title and telephone number of the medical authority or specialist
- Original signature of the medical authority or specialist

Date: _____ Social Security or ID#: _____

Legal Name: _____
Last Name First Name

Address: _____
Street City, State, Zip Code

Telephone: (____) _____ - _____ (____) _____ - _____
Home Work

Email Address: _____

Check any special arrangements you require (requests must concur with documentation submitted):

- Reader (as accommodation for visual impairment or learning disability)
- Extended Time (Additional time requested: _____)
- Large-print written examination
- Other _____

Out-of-State Testing Request (this request does not require additional documentation) _____

Site requested: _____

- Complete and fax this form, along with supporting documentation, to (702) 932-2666.
- After 4 business days, please call (800) 367-1565, ext 6750 and leave a voice message.
- PSI Special Accommodations will call you back to schedule the examination within 48 hours.

DO NOT SCHEDULE YOUR EXAMINATION UNTIL THIS DOCUMENTATION HAS BEEN RECEIVED AND PROCESSED BY PSI SPECIAL ACCOMMODATIONS.

PSI

3210 E Tropicana
Las Vegas, NV 89121